



**JOTUN**

***Jotamastic***

SMART PACK

Simply better corrosion protection  
with brush & roller application



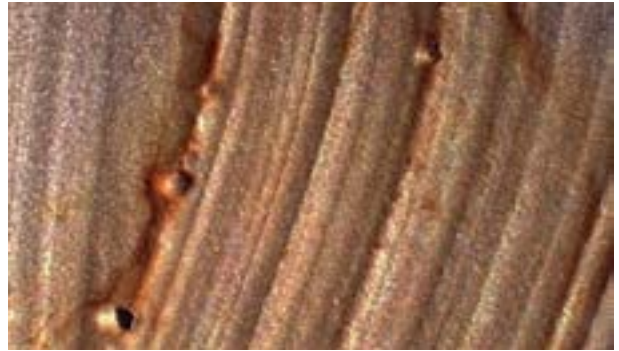


# LONGER LASTING PROTECTION

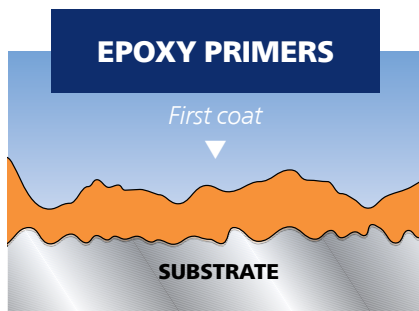
*The best protection by brush & roller application*

Coatings designed for airless spray application are often used for smaller maintenance jobs using brush or roller. In these situations long-lasting protection will not be obtained due to brush strokes and low film thickness.

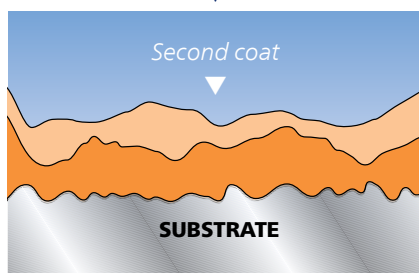
Jotamastic Smart Pack has been developed to provide excellent film formation and build the film thickness required to provide long-lasting protection.



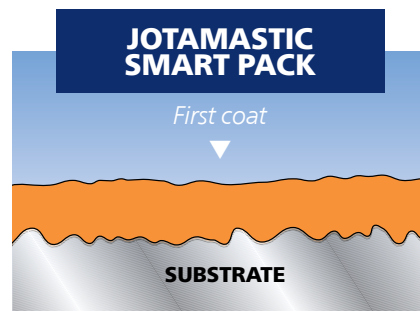
*Image shows magnification of a conventional epoxy primer that is starting to corrode on the valleys of the brush strokes, where the film thickness is low.*



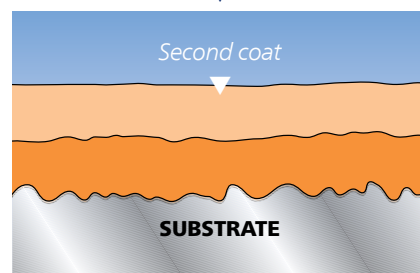
*Uneven thickness = poor protection*



*Poor flow properties = uneven film thickness – valleys between brush marks*



*Even thickness = better protection*



*Better flow properties = smoother, better protective film*



# **LONGER MAINTENANCE INTERVALS**

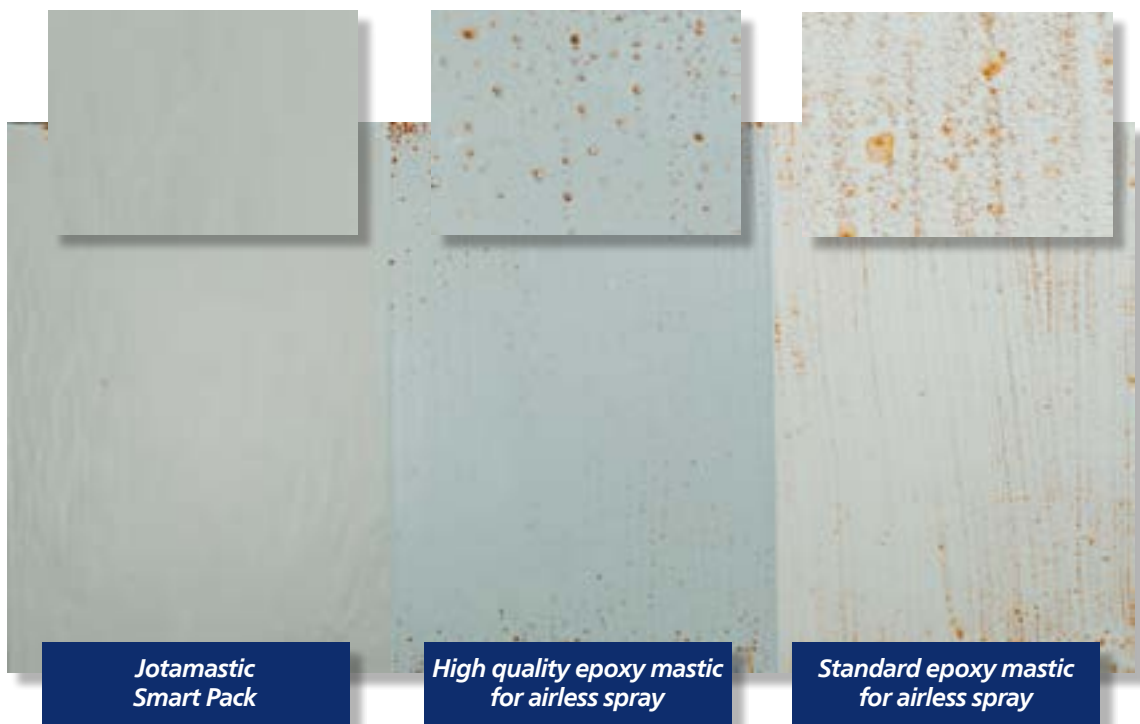
*Tailor-made for brush and roller application*

For more than 25 years, the Jotamastic range of coatings has been consistently developed to incorporate the most advanced epoxy mastic technology.

Jotun identified optimum flow characteristics (known as the science of rheology) as the key

to meeting the challenge for a maintenance anticorrosive coating for brush and roller application.

The result is Jotamastic Smart Pack which delivers a smooth and consistent protective film. The required film thickness can easily be achieved thus resulting in longer lasting corrosion protection.



*Panels in the above image are applied with brush and exposed for 7 days in an accelerated salt spray test.*



*Jotamastic Smart Pack will ensure the lasting protection of edges and difficult to reach areas.*



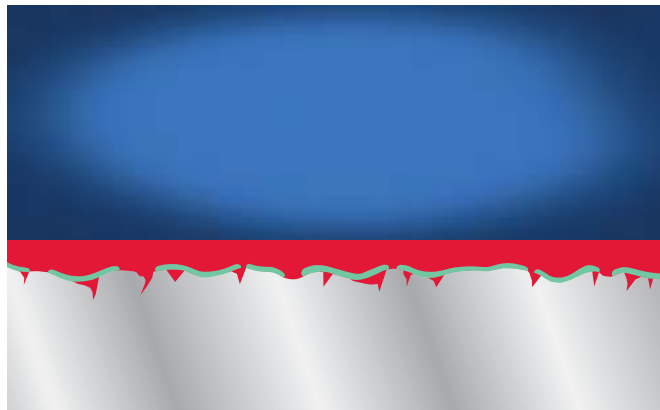
# SAVE TIME AND MONEY

*Well proven epoxy mastic technology with a track record of success over more than 25 years*

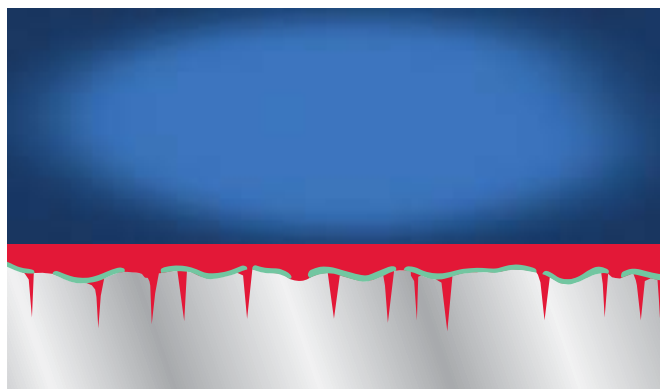
## **SIMPLER SURFACE PREPARATION**

Surface preparation represents a large share of the overall cost in a maintenance situation.

- No blast cleaning required, reducing time and cost with no compromise in protection
- Can be applied on most clean and sound surfaces
  - reducing downtime
- A solution for difficult to reach areas, where good surface preparation is not possible or desirable
- Compatible with most generic types of coatings



*Enlarged section through the coated substrate shows Jotamastic Smart Pack penetrating down into the aged surface.*



*This section shows how Jotamastic Smart Pack, having penetrated deep into the substrate, converts from a liquid coating into a solid film.*





## **REDUCE WASTE**

*Mix only what you need*

For a brush and roller applied maintenance coating, two features were requested by our customers:

- Easy to use – reducing risk of mistakes
- Easy to mix the correct amount for the job – reducing waste

Jotamastic Smart Pack fulfils these requirements in addition to being easy to handle and store, resulting in reduced inventory and waste.

Jotamastic Smart Pack is supplied:

- In two 5 litre tins
- With a 1:1 mixing ratio
- With the lid on each tin clearly marked with red and blue in order to reduce risk of mistakes

Simply mix equal amounts in the quantity required for the specific job and start applying.

*1:1 mixing ratio*



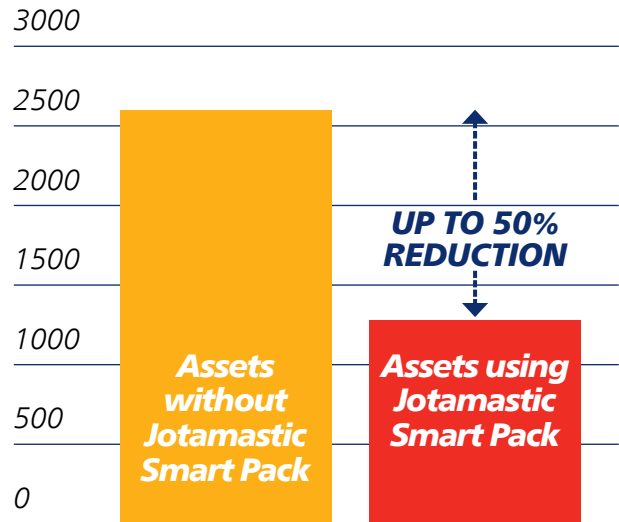


# UP TO 50% REDUCTION IN PAINT CONSUMPTION

Following the launch of Jotamastic Smart Pack, continuous large scale analysis has been carried out monitoring the effect of converting to Jotamastic Smart Pack.

**The data shows that clients converting to Jotamastic Smart Pack have reduced their consumption of maintenance paint by up to 50% and cost by approximately 25%.**

*Analysis of maintenance paint consumption  
Litres consumed per year*

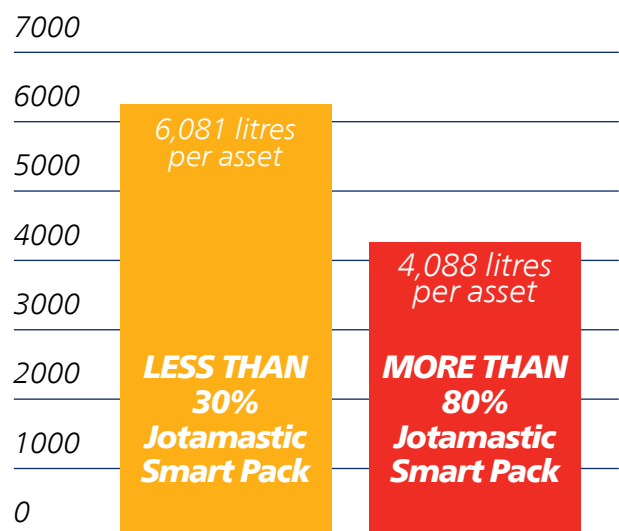


*Comparable in size, age and type*

## CASE STORY

An oil major has compared two groups of vessels, the first group is using small amounts of Jotamastic Smart Pack and the second group is using Jotamastic Smart Pack as their main maintenance primer (more than 80% of primer usage is Jotamastic Smart Pack). In the graph you can see that the second group has a total maintenance paint consumption which is 33% lower than the first group. This is mainly caused by the effect of using Jotamastic Smart Pack as their main maintenance primer.

*Oil major's vessels  
Litres consumed over a 3 year period*



*Jotamastic Smart Pack as a share  
of total anticorrosive usage*

# Marine and protective coatings offices worldwide

Legal Jotun entities world wide are listed. For details of Branch offices and Jotun representation in countries not listed, please visit [jotun.com](http://jotun.com)

## AUSTRALIA

Jotun Australia Pty. Ltd.,  
P.O. Box 105, Altona North,  
9 Cawley Road,  
BROOKLYN, VIC 3025  
Tel: +61 3 9314 0722  
Fax: +61 3 9314 0423

## BRAZIL

Jotun Brasil Ltda.  
Av Santa Luzia, 2084 - Santa Luzia  
24.722-315 São Gonçalo  
RIO DE JANEIRO  
Tel: +55 21 3147 3850  
Fax: +55 21 3147 3861

## P.R. of CHINA

Jotun Coatings (Zhangjiagang) Co. Ltd.  
Jotun COSCO Marine Coatings  
(Qingdao) Co. Ltd.  
Floor 20, Jiu Shi Mansions,  
No. 28 Zhong Shan Road (South)  
SHANGHAI 200010  
Tel: +86 21 6333 080 0  
Fax: +86 21 6326 968 6

Jotun Coatings (Zhangjiagang) Co. Ltd.  
Jotun COSCO Marine Coatings  
(Qingdao) Co. Ltd.  
Room 709-12, Goldlion Digital Network  
Centre, 138 Tiyu Road East,  
GUANGZHOU, 510620  
Tel: +86 20 38 78 07 49  
Fax: +86 20 38 78 19 66

## HONG KONG

Jotun COSCO Marine Coatings (H.K.) Ltd  
Room 1208, 12/F, Stanhope House  
734 King's Road, Quarry Bay  
HONG KONG  
Tel: +852 2527 6466  
Fax: +852 2861 1307

## DENMARK

Jotun Danmark A/S Jotun Coatings  
Columbusvej 5, 2860 Søborg,  
COPENHAGEN  
Tel: +45 4492 9400  
Fax: +45 4492 9401

## EGYPT

El Mohandes Jotun S.A.E.  
El Sheikh Aly Gad El Haq Street  
Florida Mall,  
Masaken Sheraton – 4th Floor  
CAIRO  
Tel: +20 2265 1800  
Fax: +20 2265 1801

## FINLAND

Nor-Maali OY  
Vanhatie 20, 15240 LAHTI  
Tel: +358 3 874 650  
Fax: +358 3 874 6550

## FRANCE

Jotun France S.A.  
22/24 Rue du President Wilson, Bat.A  
92300 LEVALLOIS PERRET  
Tel: +33 1 4519 3882  
Fax: +33 1 4519 3894

## GERMANY

Jotun (Deutschland) GmbH  
Haferweg 38  
22769 HAMBURG  
Tel: +49 40 851 960  
Fax: +49 40 856 234

## GREAT BRITAIN

Jotun Paints (Europe) Ltd.  
Stather Road, Flixborough,  
SCUNTHORPE DN15 8RR  
Tel: +44 1724 400 000  
Fax: +44 1724 400 100

## GREECE

Jotun Hellas Ltd.  
18, Vouliagmenis Avenue,  
Glyfada  
ATHENS 16675  
Tel: +30 210 42 85 980-82  
+30 210 42 86 035-37  
Fax: +30 210 42 85 983/  
+30 210 42 87 237

## INDIA

Jotun India Pvt Ltd.  
502, 5th Floor,  
Boston House,  
Suren Road,  
Behind Cinemax Theatre,  
Andheri East,  
Mumbai – 400 093  
Tel: +91 22 2822 4600  
+91 22 2820 5900 (+fax)  
Fax: +91 22 2820 5900

## INDONESIA

P.T. Jotun Indonesia Paints and Chemicals  
Kawasan Industri MM2100  
Blok KK-1, Cikarang Barat  
Bekasi 17520  
Tel: +62 21 8998 2657  
Fax: +62 21 8998 2658

## IRELAND

Jotun (Ireland) Ltd.,  
Unit K7, Marina Commercial Park,  
Centre Park Road, CORK  
Tel: +353 214 965955  
Fax: +353 214 965992

## ITALY

Jotun Italia S.P.A.  
Via Petronio, 8, Zona Ind. Nogheno  
34147 - MUGGIA (TRIESTE)  
Tel: +39 040 23 98204  
Fax: +39 040 23 98222

## JAPAN

NKM Coatings Co., Ltd.  
12-1, Minamirokugo 3-chome,  
Ota-ku,  
TOKYO 144-0045  
Tel: +81 3 6758 2212  
Fax: +81 3 6758 2213

## KOREA (SOUTH)

Chokwang-Jotun Ltd.  
30th Block Jisa Science Park,  
1205 Jisa-dong, Gangseo-gu,  
BUSAN 618-230  
Tel: +82 517 976 000  
Fax: +82 517 117 735

## LIBYA

Jotun Libya J.S.Co  
Almumtaz Co. S.A. (Jotun).  
Aalsek Street  
P.O. Box 6850  
TRIPOLI  
Tel: +218 214777811  
Fax: +218 214780718

## MALAYSIA

Jotun (Malaysia) Sdn. Bhd.  
Lot 7 Persiaran Perusahaan,  
Section 23, P.O. Box 7050  
40700 SHAH ALAM  
Tel: +60 351 235 500  
Fax: +60 351 235 632

## THE NETHERLANDS

Jotun B.V.  
Postbus 208  
3200 AE SPIJKENISSE  
Visiting address:  
Curieweg 11b, 3208 KJ Spijkenisse  
ROTTERDAM  
Tel: +31 181 678 300  
Fax: +31 181 617 899

## NORWAY

Jotun A/S  
P.O. Box 2021,  
3202 SANDEFJORD  
Visiting address:  
Hystadveien 167, 3209 Sandefjord  
Tel: +47 33 45 70 00  
Fax: +47 33 45 79 00

## OMAN

Jotun Pakistan Co. LLC  
Rusayl Ind. Estate, Road No.10  
P.O. Box 672 Code 111, MUSCAT  
Tel: +968 2444 6100  
Fax: +968 2444 6105

## PAKISTAN

Jotun Pakistan (Pvt.) Limited  
Plot no. 2-H, Sector 5  
Korangi Industrial Area, KARACHI  
Tel: +92 213 5121 491-2  
Fax: +92 213 5121 493

## PHILIPPINES

Jotun (Philippines) Inc.  
846 West Service Road, Km.18  
South Super Highway  
Paranaque City,  
METRO MANILA 1714  
Tel: +63 2239 1032-34  
Fax: +63 2822 0760

## POLAND

Jotun Polska Sp.zo.o.  
ul. Magnacka 15,  
80-180 GDAŃSK KOWALE  
Tel: +48 58 555 1515  
Fax: +48 58 781 9692

## RUSSIA

Jotun Paints O.O.O.  
Varshavskaya Str., 23/2, Office 53  
196128 ST. PETERSBURG  
Tel: +7 821 640 00 80  
Fax: +7 821 640 00 81

## SAUDI ARABIA

Jotun Saudia Co. Ltd.  
Jeddah Industrial City, Phase 3,  
P.O. Box 34698, JEDDAH 21478  
Tel: +966 2635 0535 / 2636 1271  
Fax: +966 2636 2483

## SINGAPORE

Jotun (Singapore) Pte. Ltd.  
37 Tuas View Crescent  
Singapore 637236  
Tel: +65 650 882 88  
Fax: +65 6265 7484

## SOUTH AFRICA

Jotun Paints South Africa (PTY) Ltd.  
Wimbledon Road, P.O.Box 187  
BLACKHEATH 7581  
Tel: +27 21 905 1070  
Fax: +27 21 905 1652

## SPAIN

Jotun Iberica S.A.  
Poligon Santa Rita,  
Calle Estatica no. 3,  
08755 Castellbisbal,  
BARCELONA  
Tel: +34 937 711 800  
Fax: +34 937 711 801

## SWEDEN

Jotun Sverige AB  
P.O. Box 151, Klangfärgsgatan 13,  
421 22 VÄSTRA FRÖLUNDA  
Tel: +46 3169 6300  
Fax: +46 3169 6397

## THAILAND

Jotun Thailand Ltd  
Amata Nakom Ind. Estate (BIPII)  
700/353 Moo 6 Tumbol  
Donhualoh, Amphur Muang  
CHONBURI 2000  
Tel: +66 38 214 824-6/214 347-51  
Fax: +66 38 214 373/375

## TURKEY

Jotun Boya San. ve Ticaret. A.S.  
Hilpark Suites Sitesi No.10,  
Istinye,  
34460 Sariyer - ISTANBUL  
Tel: +90 21 2279 7878  
Fax: +90 21 2279 2549

## U. A. E.

Abu Dhabi  
Jotun Abu Dhabi (LLC)  
P.O. Box 3714, Mussafah  
ABU DHABI  
Tel: +971 2691 0700  
Fax: +971 2551 0232

## Dubai

Jotun U.A.E. Ltd. (LLC)  
P.O. Box 3671,  
Al Quoz Industrial Area  
DUBAI  
Tel: +971 4339 5000  
Fax: +971 4338 0666

## USA

Jotun Paints, Inc.  
9203 Highway 23, P.O. Box 159,  
Belle Chasse, LA 70037  
Tel: +1 800 229 3538 /  
+1 504 394 3538  
Fax: +1 504 394 3726

## VIETNAM

Jotun Paints (Vietnam) Co. Ltd.  
Song Than Industrial. Zone,  
No.1 Street 10,  
Di An District, Binh Duong Province  
Tel: +84 650 3742206  
Fax: +84 650 374 2205

## YEMEN

Jotun Yemen Paints Co. Ltd  
P.O. Box 70183, Al Alam  
ADEN  
Tel: +967 2820 546-9  
Fax: +967 2249 362

## Jotun A/S

P.O. Box 2021,  
N-3202 Sandefjord, Norway  
Tel: +47 33 45 70 00  
[jotun.com](http://jotun.com)



Jotun Protects Property